



Surface Magnetic Contact

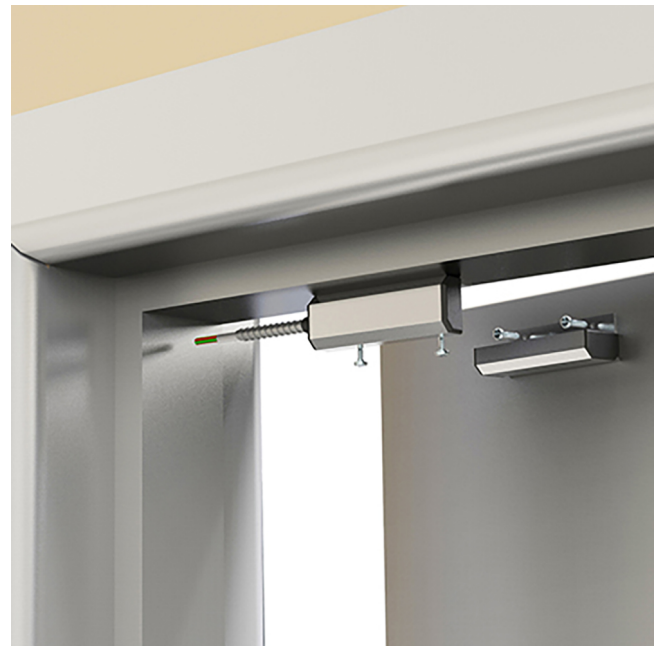
Code: GP001/G2

GP001 | Surface Contact | Grade 2 | Aluminium | Non-resistored

This heavy duty surface mounted magnetic contact can be used in most security systems up to grade 2 as specified in EN50131-1 and is compliant with EN50131-2-6 and environmental class II (for use indoors). This contact can be used on doors and windows to detect the unauthorised entry of an intruder. A number of applications are shown over. The contact is sealed to prevent access to inside of the unit.

Features & Benefits

- High Quality Alloy Finish
- Double pole configuration
- 57cm Armoured cable lengths
- EN50131-2-6 Grade 3
- Environmental Class II



Product Information

Connection type	Wired
-----------------	-------

Security

EN50131-2-6 Grade	2
Tamper Protection	Internal

Environmental

EN50130-5 class	Class III
IP Rating	3X
Temperature range	-10°C - +40°C

Housing

Colour	Aluminium
Material	Aluminium
Contact Dimensions (mm)	85 x 27 x 26
Magnet Dimensions (mm)	85 x 27 x 26

Electrical

Connection type	Wired
No. of terminals	4 Wire
Contact type	Normally Closed
Contact Material	Rhodium
Wire length (mm)	470

Features

Mode of operation	DP
Operation Axes (X, Y, Z)	Y, Z
Pull-in gap (X, Y, Z)mm	30, 40
Suitable for Double Door	Yes
No. of terminals	4 Wire